



# LANCO

TentTech · DeconTech · FlexTank

## CBRN - COLPRO

COLPRO Shelters | Air Filtration Units | Airlocks | HVAC ECUs

[www.lanco-tents.com](http://www.lanco-tents.com)

## CBRN COLPRO SYSTEMS

LANCO's integrated ColPro systems are designed, engineered, and manufactured to meet rigorous standards. They are manufactured according to customer specification with efficient, rapid setup and operation in focus for decontamination and protection under military biological and chemical threats and in case of industrial accidents, or for medical purposes. New design compliant with ATP 70 and a new generation in the COLPRO product range.

### Key Features

- ▲ Custom designed CCAs and TFAs
- ▲ CCAs can be fitted with decon systems
- ▲ COLPRO environments can be created in all our shelters



## CORE FUNCTIONS

### Barrier Protection

- ▲ Combination of the tent's skin and the inner liner. Liners are provided with integrated connectors so shelters can be structured in any configuration (end-to-end or side-to-side).

### Air Filtration

- ▲ Our air filtration units (AFU) equipped with HEPA filters and active charcoal filtration are vital components of the air purification system. The AFU provides sufficient air flow to supply the toxic free area (TFA) with clean air.
- ▲ These components have been tested and qualified for harsh expeditionary environments and are used throughout the world protecting key personnel and assets.

### Overpressure

- ▲ The air filtration system creates a positive pressure environment (relative to the outside atmosphere) in the CBRN liner which establishes the Toxic Free Area (TFA).
- ▲ This over pressurization feature creates positive pressure within the shelter to ensure that the TFA is impervious to airborne toxic gases and/or particles.

### Accessibility

- ▲ Multiple person air locks capable of allowing access to patients on stretchers are also available.
- ▲ Shelters support attachable (single person) air locks. The air lock provides access into and out of the Toxic Free Area without compromising its integrity.



## CCA SYSTEM

Contamination Control Area (CCA) is the system entrance where decontamination takes place.



Pressure Indication Unit (PIU) shows the overpressure in each area and will alarm you visually if a pressure failure should occur to the system.

## DECONTAMINATION

The shower unit can be integrated into the inner liner or kept as a separate part of the unit for wet decontamination.



## CBRN INNER LINNER

- ▲ Can be used between -40 / +70° C.
- ▲ Can be sewed and hot air welded.
- ▲ Tested by Porton Down UK and US Army RDECOM.
- ▲ Withstands the most known and common agents like mustard gas, VX, Tabun, Soman, Sarin, Lewisite between 24 and 72 hours.



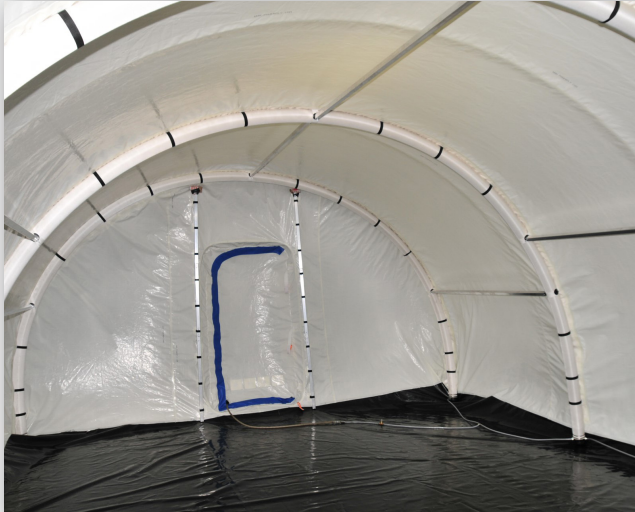
## AIRLOCK SYSTEM

- ▲ The airlock system is equipped with aluminum solid doors and mechanical air flow steering/overpressure regulation.
- ▲ The doors are permanently mounted to a solid frame system.
- ▲ It can be mounted before the CCA, between CCA/Decon and the TFA area.
- ▲ The length of the airlock depends on the specification of use (walking persons, stretcher, equipment to move in and out).



## TFA SYSTEM

The TFA area protects personnel and equipment against chemical and biological agents and nuclear fall out (not against radiation).



## AIR FILTRATION UNIT

▲ Provides 600 m<sup>2</sup>/h or 300 m<sup>2</sup>/h clean air inside the COLPRO system.

▲ Keeps the system under constant overpressure to avoid new contamination with dangerous agents or gasses.

▲ Provided with a unique audio and visual alarm for filter change or electrical failure.

▲ Alarm can be extended by wire to an external control or command post or inside the shelter system.







# LANCO

TentTech · DeconTech · FlexTank

**LANCO - Dr. Lange GmbH & Co. KG**

Sure Wisch 6  
30625 Hannover, Germany

Tel: +49 (0) 511 367 155 -0  
Fax: +49 (0) 511 367 155 -140  
Email: [info@lanco-tents.com](mailto:info@lanco-tents.com)

[www.lanco-tents.com](http://www.lanco-tents.com)

